

## NSCE 65-125/92/P25VCC4

### Technical data

Company name  
Contact  
Phone number  
e-mail address

#### Operating data

1	Pumpe type	Single head pump	Fluid	Water, pure
2	No. of pumps	1	Operating temperature t A	K 277
3	Nominal flow	m³/h 128	Max / Min Operating Temperature mech. Seal	K 120 / -25
4	Nominal head	m 21.18	pH-value at t A	7
5	Static head	m 0	Density at t A	kg/m³ 1000
6	Inlet pressure	kPa 0	Kin. viscosity at t A	mm²/s 1.569
7	Environmental temperature	K 293	Vapor pressure at t A	kPa 100
8	Available system NPSH	m 0	Altitude	0

#### Pump data

9	Lubrication Standard, Grease lubrication [Std]										
10	Execution	2 poles motor			Impeller Ø	Max.	mm	148			
11	Design	Horizontal				designed	mm	146			
12	Operating speed		2920 1/min	Stages		1	Min.	mm	113		
13	Suction nozzle		DN 80	/	PN 16	/	EN1092-2	Flow	Nominal	m³/h	128.1
14	Discharge nozzle		DN 65	/	PN 16	/	EN1092-2		Max-	m³/h	177.2
15	Max. casing pressure		kPa						Min-	m³/h	35.5
16	Max. working pressure		kPa		281.7			Head	Nominal	m	21.2
17	Impeller type			Radial impeller			at Qmax		m	13	
18	Head H(Q=0)		m		29		at Qmin		m	28.7	
19	Max. shaft power		kW		9.5			Shaft power		kW	9.1
20	Pump weight		kg					Efficiency		%	80.7
21	Total weight		kg		88.0			NPSH 3%		m	

#### Materials

22		Pump		Shaft Seal
23	Volute Casing	Cast Iron		Single mechanical seal, without shaft sleeve
24	Casing Cover	Cast Iron		eMG12 - Ø22mm
25	Impeller	Cast Iron		Mechanical seal diameter
26	Shaft	Stainless steel		22 mm
27	Wear ring	Stainless steel		1. Rotating ring
28	Impeller lock nut and washer	Stainless steel		Carbon graphite resin impregnated
29	Impeller key	Stainless steel		2. Stationary ring
30	Fill and drain plugs	Stainless steel		SiC, silicon carbide, sintered press.less
31				3. Secondary seal
32				Ethylene propylene rubber (EPDM)
33				4. Springs
34				CrNiMo - Steel
35				5. Others
36				EPDM - WRAS
37				Gaskets of the pump
38				Ethylene propylene rubber (EPDM)
39				
40				
41				

#### Motor data

Electrical and dimensional data refer to IE3 motor

42	Manufacturer	Lowara			
43	Specific design	IE3 3ph Flange Motor			
44	Type	PLM 132 B14 9,2 kW			
45	Rated power	9.2 kW	Rated current	17.4 A	
46	Nominal speed	2920 1/min	Rated voltage	400 V	
47	Frame size	132	Service factor	1	
48	Weight	kg 70.4	Degree of protection	IP55	

#### Remarks

49	
50	
50	
52	

Project  
Block 2

Created by  
Created on Vilijus Marma  
12/14/2023

Last update 12/14/2023

## NSCE 65-125/92/P25VCC4

### Performance curve

Company name  
Contact  
Phone number  
e-mail address

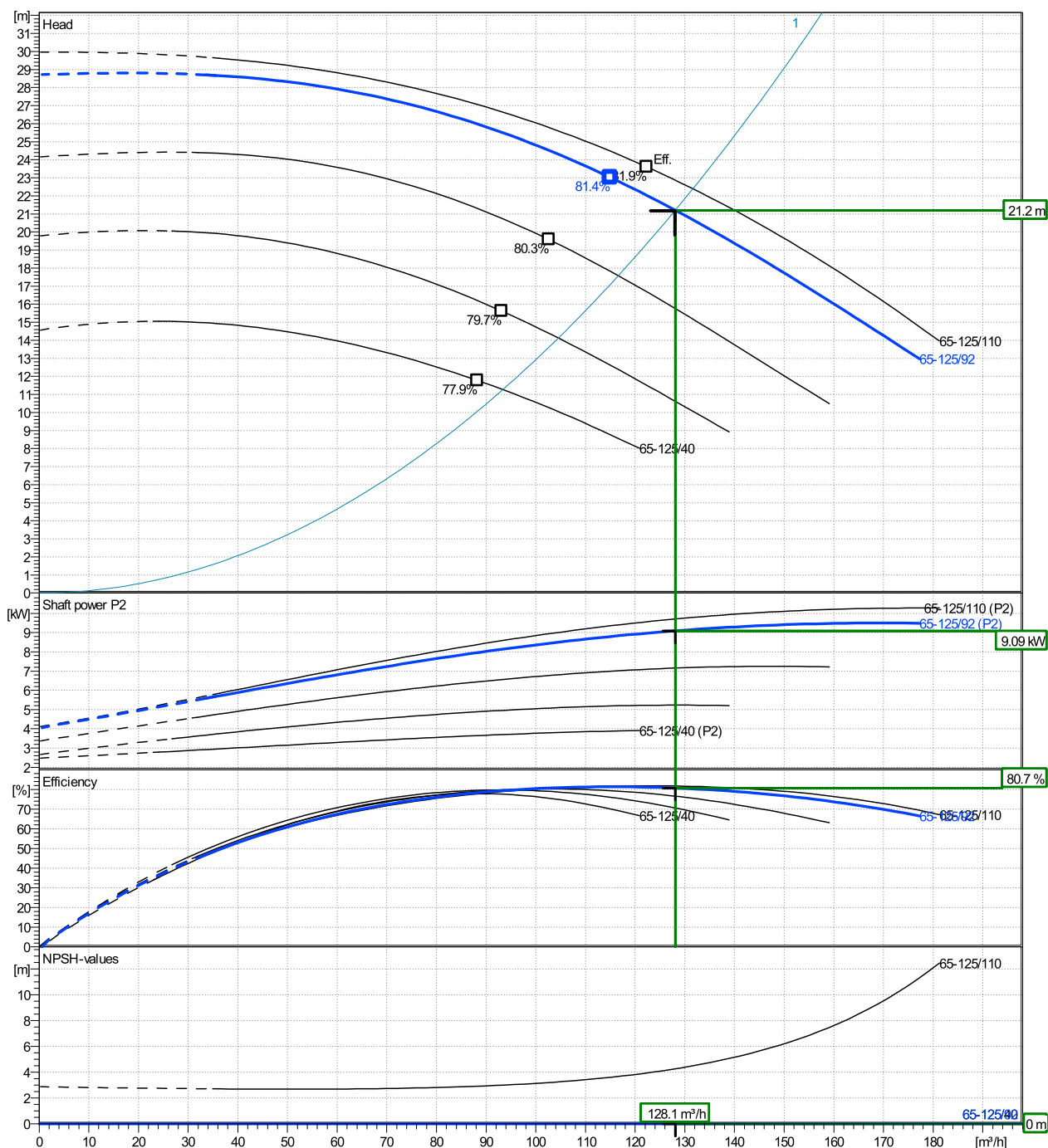
	Ø	Pump capacity			Pump head		Shaft power P2			Frequency	Hz	50
	mm	Operating range	Min.	Max.	Max.	H(Q=0)	η	Max.	η	Operating speed	1/min	2920
		m³/h	m³/h	m³/h	m	m	P2(Q=0)	kW	kW	Nominal flow	m³/h	128
actual	146	35.5	177	115	28.7	23		9.5	8.79	Nominal head	m	21.18
Min.	0	/	/	88.2	14.6	11.8		/	3.65	Inlet pressure	kPa	0
Max.	148	/	/	122	30	23.6		/	9.56	Static head	m	0

Power datas referred to:

hydr. Performance acceptance acc. To EN ISO 9906 Class Grade 3B

Water, pure [100%] ; 277K; 1000kg/m³; 1.57mm²/s

MEI: N.A - according to Ecodesign Directive 2009/125/EC and Regulation (EU) No.547/2012



Project  
Block Block: 2

Created by Vilnius Marm  
Created on 12/14/2023

Last update 12/14/2023

Program version  
71.0 - 17/11/2023 (Build 91)

Data version  
13/12/2023 10:49

User group(s)  
Xylem: Lithuania - EXT

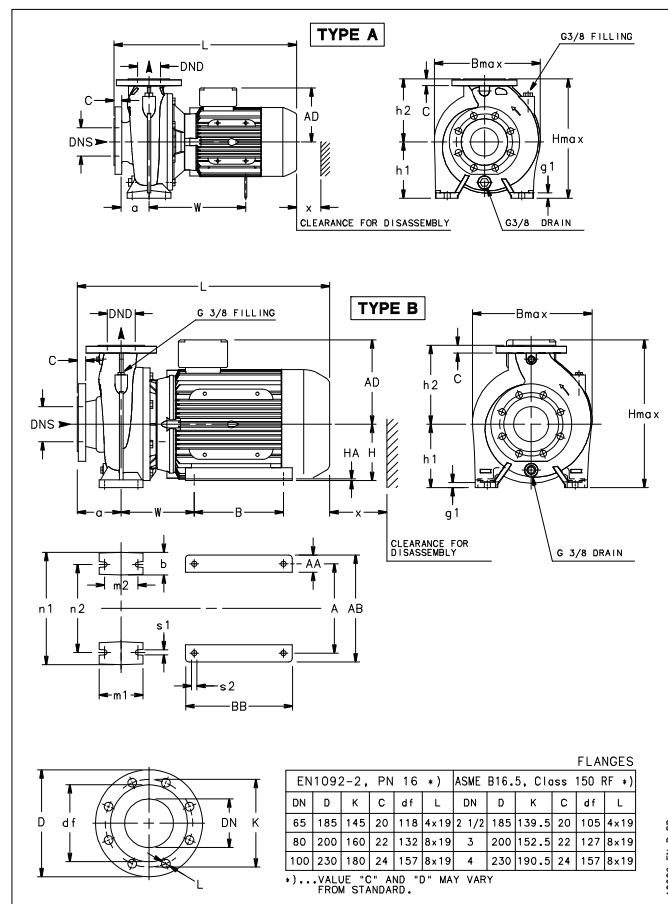
## NSCE 65-125/92/P25VCC4

## Dimensions

Company name  
Contact  
Phone number  
e-mail address

Extended shaft  
2 poles motor  
PLM 132 B14 9,2 kW

Electrical and dimensional data refer to IE3 motor



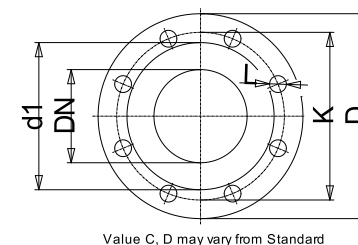
Dimensions		[ mm ]	
a	100		
AD	191		
B max	300		
b	65		
DND	65		
DNS	80		
g1	16		
H max	351		
h1	160		
h2	180		
L	607		
m1	125		
m2	95		
n1	280		
n2	212		
s1	14		
Type	A		
W	345		
x	100		

### Weight

Total weight 88 kg

### Connections

Suction nozzle		Discharge nozzle	
DN 80		DN 65	
PN 16		PN 16	
EN1092-2		EN1092-2	
C	22	C	20
D	200	D	185
df	132	df	118
DN	80	DN	65
K	160	K	145
L	8 x 19	L	4 x 19



Value C, D may vary from Standard

### Dimensions and weight without obligation

Project	Block	Block: 2	Created by	Vilius Marna	Last update	12/14/2023
Block	Block: 2		Created on	12/14/2023		